

MOUNTAIN FALLS GATEWAY

ACRES-ID: 148001 and 147981
Address: State Highway 160 & Mountain Falls Boulevard
Pahrump, NV 89061
APN: 045-011-23 and 045-011-19
County: Nye
Latitude: 36° 9' 14.46" N (center of boundary between the two parcels)
Longitude: 115° 54' 00" W (center of boundary between the two parcels)
Size: 7.64 and 3.44 acres

History:

The undeveloped property resides in an area of the Pahrump Valley with a history of agricultural use.

Environmental Work:

A Phase I Environmental Site Assessment was completed in July 2012. Contaminants from nearby agricultural facilities were suspected; however, no evidence was found to warrant a Phase II Environmental Site Assessment.

Existing Condition:

The property is vacant and ready for redevelopment.

Future Use:

The property is being evaluated for a mixed-use commercial development.

Nye County Contact:

For current county contact information, please visit www.rdsbc.org/contact-us/

**RURAL DESERT
SOUTHWEST BROWNFIELDS
COALITION**

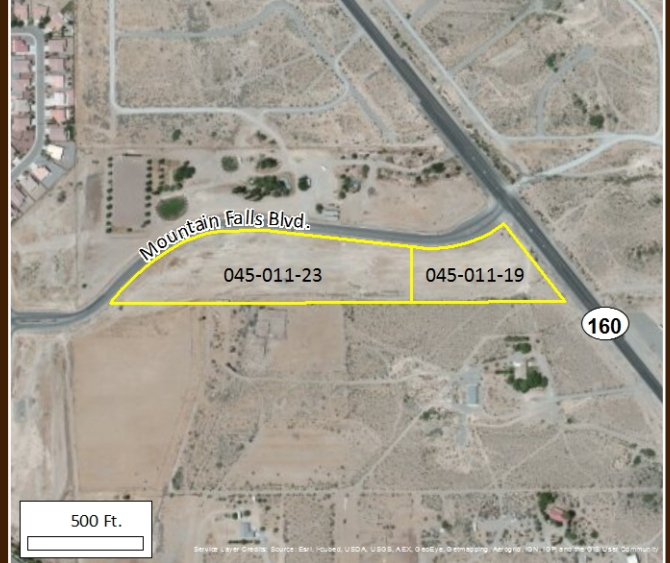
The Rural Desert Southwest Brownfields Coalition (RDSBC) is comprised of Esmeralda, Lincoln, Mineral, Nye and White Pine Counties, NV, and Inyo County, CA.

<http://www.rdsbc.org/>

Mountain Falls Gateway Photo



Aerial Photo



Location within the RDSBC

